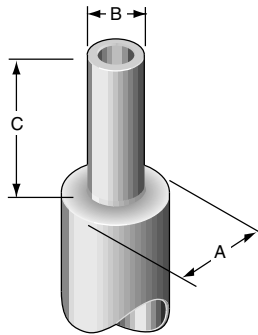


ALUMINUM TENONS FOR ROUND/SQUARE POLES, FESTOON OUTLETS AND DRILLING

ALUMINUM TENONS

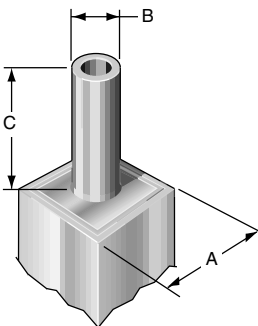
Tenons are designed for single luminaire mounting.
When eccentric loads or multiple luminaire mounting is required, contact the Valmont Industries for loading capabilities.



TENONS FOR ROUND POLES

"A" LIGHT POLE DIAMETER	"B" TENON OUTSIDE DIAMETER	"C" TENON LENGTH	MODEL NUMBER
2-3/8"	1-5/8"	4"	2416TP40R
3"	2-3/8"	4"	3024TP50R
4"	2-3/8"	4"	4024TP50R
4"	2-7/8"	4"	4028TP50R
4"	3-1/2"	4"	4035TP50R
4-1/2"	2-3/8"	4"	4524TP60R
4-1/2"	2-7/8"	4"	4528TP60R
4-1/2"	4"	4"	4540TP60R

"A" LIGHT POLE DIAMETER	"B" TENON OUTSIDE DIAMETER	"C" TENON LENGTH	MODEL NUMBER
5	2-3/8"	4"	5024TP60R
5	2-7/8"	4"	5028TP60R
5	4"	4"	5040TP60R
6	2-3/8"	4"	6024TP70R
6	2-7/8"	4"	6028TP70R
6	3-1/2"	4"	6035TP70R
6	4"	4"	6040TP70R
6	4-1/2"	4"	6045TP60R

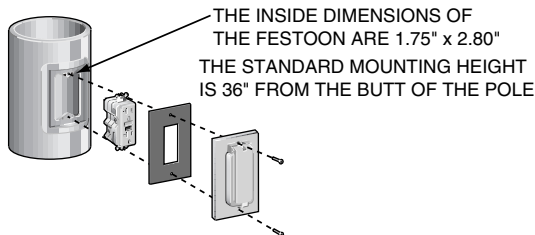


TENONS FOR SQUARE POLES

"A" LIGHT POLE DIMENSION	"B" TENON OUTSIDE DIAMETER	"C" TENON LENGTH	MODEL NUMBER
4"	2-3/8"	4"	4024TP60Q
4"	2-7/8"	4"	4028TP60Q
4"	3-1/2"	4"	4035TP60Q
5"	2-3/8"	4"	5024TP60Q
5"	2-7/8"	4"	5028TP60Q
5"	3-1/2"	4"	5035TP60Q

"A" LIGHT POLE DIMENSION	"B" TENON OUTSIDE DIAMETER	"C" TENON LENGTH	MODEL NUMBER
5"	4"	4"	5040TP60Q
6"	2-3/8"	4"	6024TP60Q
6"	2-7/8"	4"	6028TP60Q
6"	3-1/2"	4"	6035TP60Q
6"	4"	4"	6040TP60Q

FESTOON OUTLET



A peripherally reinforced aluminum casting shall be flush welded to the standard. Weatherproof covers will be supplied with the receptacle specified. Festoons are not available for 3" diameter poles. Call factory for acceptable festoon locations.

PRONG	RECEPTACLE	VOLTS	AMPS	PART NUMBER
3	Duplex	125	15	3DR12515
3	Twist Lock Single	125	15	3TSR12515
3	Twist Lock Duplex	125	15	3TDR12515
3	Duplex	125	20 *	3DR12520G

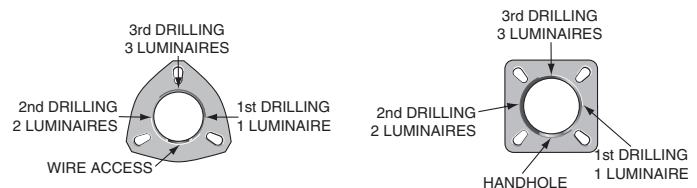
* With Ground Fault Circuit Interrupter

* The festoon covers provided are intended for portable tools or other portable equipment connected to the outlet only when attended. For other weather protection requirements or indefinite outlet connection time consult the factory.

POLE CAPS



DRILLING FOR LUMINAIRE MOUNTING



Drilling will be oriented to the handhole or wire access hole.

UNLESS SPECIFIED OTHERWISE:

Drilling for 1st luminaire: 90° to the right of handhole or wire access.

Drilling for 2nd luminaire: 90° to the left of handhole or wire access.

Drilling for 3rd luminaire: 180° from handhole or wire access.

When poles are drilled for luminaire mounting, pole top caps will be supplied. Black plastic pole top caps are standard. Cast caps with screws are available as an adder.