

- 8' to 20' mounting heights.
- 4", 5", and 6" diameter poles.
- Luminaires may be mounted on tenons, brackets slipfitted on the pole top or shaft may be drilled to manufacturer's specifications.

## SPECIFICATIONS

All aluminum alloys shall comply with metallurgical and mechanical properties set forth in the Aluminum Association Standards.

**Shaft:** The shaft shall be spun tapered from all new seamless 6063 alloy aluminum tubing and shall be heat treated to produce a T6 temper. Each shaft shall have a minimum 6" long of straight section at the top and shall be cone tapered to the base diameter. The shaft may be drilled for mounting luminaires. The shaft shall be polished with fine grain aluminum oxide cloths, resulting in a high quality circumferential satin brushed finish. After finishing, each pole shall be fully wrapped for protection in shipment.

**Hinged Anchor Base:** The hinged anchor base is cast from A356 alloy aluminum. The shaft shall be inserted into the tilting section of the hinged base and shall be joined to it by continuous circumferential welds. The tilting and anchored sections of the hinged base shall be joined by a 3/4" diameter solid aluminum pivot rod. The tilting section of the hinged base shall be held in a vertical position by (3) 1/2"-13 x 2" stainless steel hex head bolts. These bolts shall attach to stainless steel inserts cast into the aluminum base. A cast aluminum 2-piece cover is included. The completed assembly shall be heat treated to a T6 condition.

**Anchor Bolts:** Each anchor base shall include: (4) steel hot dip galvanized anchor bolts each with (2) nuts and (2) flat washers sized to match the anchor bolts.

**Special Finishes:** Natural anodize, duranodic, or painted finishes may be specified as an option to the satin brushed finish. All aluminum parts and accessories shall receive a finish similar to that specified.

**Handhole:** Available as an option.

## CATALOG LOGIC

Feet and Inches	Top Diameter	Base Diameter	Wall Thickness	Shape of Shaft	Base or Mounting	Fixture Mounting	Finishes	Options
<input type="text"/>	<input type="text"/>	<input type="text"/>	<input type="text"/>	<input type="text"/>	<input type="text"/>	<input type="text"/>	<input type="text"/>	<input type="text"/>

Feet & Inches*	Diameter*	Wall Thickness*	Shape of Shaft	Base or Mounting	Fixture Mounting	Finishes	Options
0708 - 8'	TOP DIAMETER IN INCHES	THICKNESS IN 32NDS OF AN INCH	T - Tapered Round	H - Hinged Base	D1 - 1@90° D2 - 2@180° D3 - 3@120° D4 - 4@90° D5 - 2@90° D6 - 3@90° P2 - 2-3/8" x 4 Tenon P9 - Other Tenon (Please Specify)	POLYESTER POWDER DBL - Black DCG - Charcoal Gray DMB - Med Bronze DSB - Steel Blue DTG - Dark Green SC - Special Color (Please Specify) ANODIZED 204 - Clear Natural 312 - Med Bronze* 335 - Black* BRUSHED SBF - Satin Brushed Finish	DBR - Bright Red DDB - Dark Bronze DNA - Natural Alum DSS - Sandstone DWH - White 311 - Light Bronze* 313 - Dark Bronze* * Duranodic Anodize
0908 - 10'	30 - 3"	4 - 4/32" or 0.125" Wall					See Accessory Section (Please Specify with Code #)
1108 - 12'	40 - 4"	5 - 5/32" or 0.156" Wall					
1308 - 14'	BASE DIAMETER* IN INCHES	6 - 6/32" or 0.188" Wall					
1508 - 16'	40 - 4"						
1708 - 18'	50 - 5"						
1908 - 20'	60 - 6"						

\* For available Base Diameter, Wall Thickness and Length Combinations, see Dimensional Load Data Table that follows.

Customer Approval: \_\_\_\_\_

signature

date

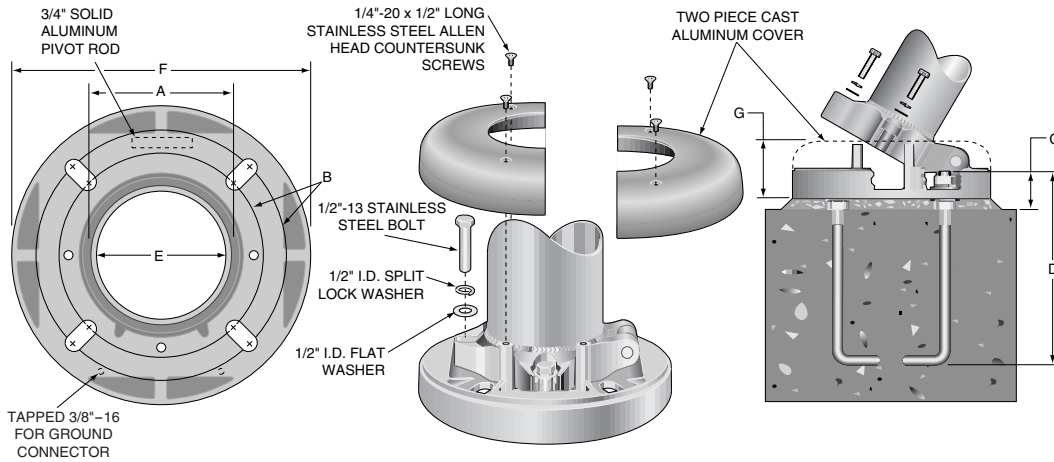
Job Name: _____	Quote: _____
Client Name: _____	
Created By: _____	Date: _____

# 8' TO 20' ROUND TAPERED HINGED BASE POLES

## ANCHOR BASE AND LOAD DETAIL

## BASE DIMENSIONS

A	B	C	D	E	CONDUIT PROJECTION	F	G
POLE DIAMETER	BOLT CIRCLE	BOLT PROJECTION	BOLT SIZE	CONDUIT OPENING		DIAMETER	HEIGHT
4"	8-1/2" -10"	3-1/2"	3/4" x 17"	3-1/2"	1-1/2"	12-5/8"	3-1/16"
5"	8-1/2" -10"	3-1/2"	3/4" x 17"	4-1/2"	1-1/2"	12-5/8"	3-1/16"
6"	8-1/2" -10"	3-1/2"	3/4" x 17"	5-1/2"	1-1/2"	12-5/8"	3-1/16"



## DIMENSIONAL AND LOAD DATA

TYPICAL WEIGHT AND ALLOWABLE SIZE OF LUMINAIRES*							DIMENSIONS OF POLES				
NOMINAL MOUNTING HEIGHT	TYPICAL LUMINAIRE WEIGHT (LBS.)	EFFECTIVE PROJECTED AREA IN SQUARE FEET AT:					POLE HEIGHT	TOP	BASE	WALL	MODEL NUMBER **
		70 MPH	80 MPH	90 MPH	100 MPH	110 MPH					
8'	50	16.1	12.1	9.3	7.3	5.9	7'8"	3"	4"	.125"	0708 - 30404TH
10'	50	12.0	8.9	6.7	5.2	4.1	9'8"	3"	4"	.125"	0908 - 30404TH
10'	50	19.7	14.7	11.4	9.0	7.3	9'8"	3"	5"	.125"	0908 - 30504TH
12'	50	9.1	6.6	4.9	3.6	2.8	11'8"	3"	4"	.125"	1108 - 30404TH
12'	50	15.5	11.5	8.7	6.8	5.4	11'8"	3"	5"	.125"	1108 - 30504TH
12'	50	19.4	14.5	11.1	8.7	7.0	11'8"	3"	5"	.156"	1108 - 30505TH
12'	50	23.4	17.5	13.5	10.6	8.6	11'8"	3"	5"	.188"	1108 - 30506TH
14'	50	7.0	4.9	3.5	2.5	1.8	13'8"	3"	4"	.125"	1308 - 30404TH
14'	50	12.3	9.0	6.7	5.1	4.0	13'8"	3"	5"	.125"	1308 - 30504TH
14'	50	15.6	11.5	8.7	6.7	5.3	13'8"	3"	5"	.156"	1308 - 30505TH
14'	50	18.9	14.0	10.7	8.4	6.7	13'8"	3"	5"	.188"	1308 - 30506TH
16'	50	5.4	3.6	2.4	1.5	1.0	15'8"	3"	4"	.125"	1508 - 30404TH
16'	50	9.9	7.0	5.1	3.8	2.9	15'8"	3"	5"	.125"	1508 - 30504TH
16'	50	12.6	9.1	6.8	5.2	4.0	15'8"	3"	5"	.156"	1508 - 30505TH
16'	75	15.4	11.2	8.5	6.5	5.2	15'8"	3"	5"	.188"	1508 - 30506TH
16'	75	19.2	14.2	11.0	8.7	7.0	15'8"	4"	6"	.156"	1508 - 40605TH
16'	75	23.4	17.5	13.5	10.8	8.8	15'8"	4"	6"	.188"	1508 - 40606TH
18'	50	7.9	5.4	3.8	2.7	2.0	17'8"	3"	5"	.125"	1708 - 30504TH
18'	75	10.2	7.2	5.2	3.9	3.0	17'8"	3"	5"	.156"	1708 - 30505TH
18'	75	12.7	9.1	6.7	5.1	4.0	17'8"	3"	5"	.188"	1708 - 30506TH
18'	75	15.9	11.7	8.9	7.0	5.6	17'8"	4"	6"	.156"	1708 - 40605TH
18'	75	19.6	14.5	11.1	8.8	7.1	17'8"	4"	6"	.188"	1708 - 40606TH
20'	75	6.3	4.1	2.7	1.7	1.1	19'8"	3"	5"	.125"	1908 - 30504TH
20'	75	8.5	5.8	4.0	2.8	2.0	19'8"	3"	5"	.156"	1908 - 30505TH
20'	75	10.7	7.5	5.3	3.9	2.9	19'8"	3"	5"	.188"	1908 - 30506TH
20'	75	13.3	9.5	7.1	5.5	4.4	19'8"	4"	6"	.156"	1908 - 40605TH
20'	75	16.6	12.0	9.1	7.1	5.7	19'8"	4"	6"	.188"	1908 - 40606TH

**CAUTION:** Raising or lowering of the pole requires adequate preparation. Do not underestimate the force required to raise or lower poles with heavy luminaires at the top. **Handholes:** Peripherally reinforced handholes are available as an accessory.

\* EPA calculations are based on a 1.3 Gust Factor. Variations from sizes listed above, available upon inquiry at the factory. Satisfactory performance of lighting poles is dependent upon the pole being properly attached to a supporting foundation of adequate design. Valmont does not design or offer recommendations for foundations.

\*\* Model number does not include mounting options or finish designation.